

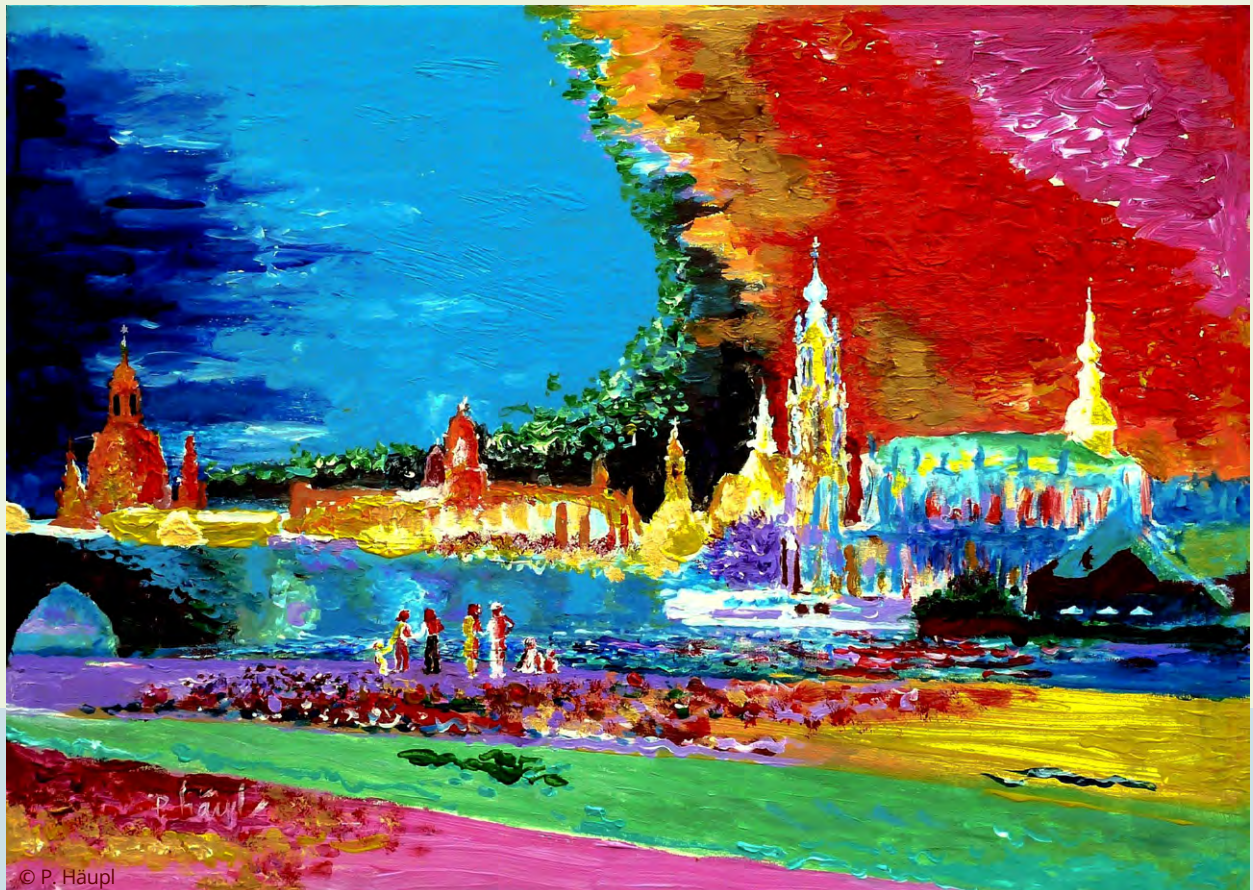
PROCEEDINGS

CESBP  2016


BauSIM
2016

CENTRAL EUROPEAN SYMPOSIUM ON BUILDING PHYSICS 2016 / BauSIM 2016

September 14–16, 2016
DRESDEN, GERMANY



Editor

Fraunhofer IRB  Verlag



J. Grunewald

<https://doi.org/10.51202/9783816797982-1>

Generiert durch IP '18.216.169.169', am 24.05.2024, 12:28:42.

Das Erstellen und Weitergeben von Kopien dieses PDFs ist nicht zulässig.

PROCEEDINGS OF THE

**CESBP Central European
Symposium on Building Physics**

AND

BauSIM 2016

September 14 - 16, 2016
Dresden, Germany

IMPRINT

Editor:
Technische Universität Dresden
John Grunewald
Zentrum für Bauforschung – Institut für Bauklimatik
Zellescher Weg 17
D-01062 Dresden

Phone +49 351 463 35259
Fax +49 351 463 32627
URL <https://tu-dresden.de/bu/architektur/ibk>

Bibliographic information published by Die Deutsche Nationalbibliothek

Die Deutsche Nationalbibliothek lists this publication in the Deutsche Nationalbibliografie; detailed bibliographic data is available in the Internet at www.dnb.de.

ISBN (E-Book): 978-3-8167-9798-2

Copy-editing: Anita Morandell Meißner
Producer: Fraunhofer IRB Verlag
Cover design: K.I.T. Group GmbH Dresden

All rights reserved.

No part of this publication may be translated, reproduced, stored in a retrieval system or transmitted in any form or by any means, electronic, mechanical including photocopying, recording, fax or otherwise, without the written permission of the publisher.

Many of the designations used by manufacturers and sellers to distinguish their products are claimed as trademarks. The quotation of those designations in whatever way does not imply the conclusion that the use of those designations is legal without the consent of the owner of the trademark.

The publisher provides no guarantee for the accuracy, completeness, and currency of any laws, regulations or guidelines directly or indirectly invoked or quoted in this book. Should readers require any information for their own purposes, direct consultation of the full, current edition of the relevant laws, regulations or guidelines is recommended.

© by Fraunhofer IRB Verlag, 2016

Fraunhofer Information-Centre for Regional Planning and Building Construction IRB
P.O. Box 80 04 69, D-70504 Stuttgart
Nobelstrasse 12, D-70569 Stuttgart

Phone +49 711 970-2500
Fax +49 711 970-2508
E-Mail irb@irb.fraunhofer.de
URL www.baufachinformation.de

TABLE OF CONTENTS

IMPRINT	II
PREFACE	IX
COMMITTEES	XI
PLENARY LECTURES	1
A-02: Plenary Session	
A-02-3 AixLib – An open-source Modelica library within the IEA-EBC Annex 60 framework	3
A-03: Plenary Session	
A-03-1 Energy ⁺ -settlements and -quarters – definition, planning, operation, monitoring and certification	11
A-03-3 Making the performance gap smaller and predictable	19
CONFERENCE PAPERS	21
B-01: Building Envelope Systems	
B-01-1 Design rules for floor heating system using new analytical formulas.....	23
B-01-2 Exploring flooding and rising water problems related to heritage; Case study St. Catherine’s Chapel, Lemiers, The Netherlands	29
B-01-3 Calculating pareto-optimal airtightness levels for residential buildings	37
B-02: Salt and Frost Damage	
B-02-1 Salt Damage of the stone Buddha carved into the cliff.....	45
B-02-2 Comparison of frost damage indexes for two different weather years in the Czech Republic.....	53
B-02-3 Effect of salts and absorption cycles in the capillary coefficient of building materials with different joints.....	61
B-03: Building Envelope Systems	
B-03-1 A thermal conductivity prediction model for porous building blocks	67
B-03-2 Results of Belgian quality control framework for cavity wall insulation.....	75
B-03-3 Sensitivity analysis of hygrothermal performance of highly insulated wall assemblies	83
B-04: Degradation and Damage Processes	
B-04-1 Degradation of the wall paintings of Hagia Sophia in Istanbul	91
B-04-2 Prediction of wood decay progress with natural infection under fluctuated temperature within building envelopes.....	99
B-04-3 Modeling damage of building materials induced by sodium sulfate crystallization.	105
B-05: Building Material Properties	
B-05-1 Modelling of water vapour sorption in silicate-based building materials	111
B-05-2 Experimental investigation of capillary absorption along mortar-brick interface plane	117
B-05-3 Impact of gypsum pore clogging on moisture transfer properties of bricks.....	125
B-06: Urban Physics	
B-06-1 Development of hygrothermal reference years for Germany.....	133
B-06-2 Influences of wind-driven rain and radiation on urban microclimate	141
B-06-3 Local climate models for hygrothermal building component simulations	149

B-07: Building Envelope Systems	
B-07-1	Investigation of leakage moisture in walls with wood fibre insulation157
B-07-2	Numerical modeling of coupled hygrothermal phenomena and frost-induced strains in moist building materials.....165
B-07-3	Cavity ventilation behind brick veneer cladding: experimental and numerical investigation.....171
B-08: Building Envelope Systems	
B-08-1	A mathematical model for hysteresis of sorption isotherm of salt-laden porous materials.....179
C-01: Integral Energy Concepts for Buildings and Neighborhoods	
C-01-1	Optimising buildings based on renewable primary energy183
C-01-2	Energy performance and lifecycle cost optimization of a local smart heating and electricity grid191
C-01-3	Hygrothermal behaviour of prefabricated wood frame façade elements for building renovation197
C-02: Integral Energy Concepts for Buildings and Neighborhoods	
C-02-1	Houses as thermal batteries for the electric grid?205
C-02-2	Durability of thermal renderings: Durability assessment procedures213
C-02-3	Turbine-House: patented energy plus innovation221
C-03: Integral Energy Concepts for Buildings and Neighborhoods	
C-03-1	Non-residential buildings: Input parameters for modeling the energy demand227
C-03-2	Database development with “3D-CityGML”- and “EnergyADE”- schema for city-district-simulation modelling235
C-03-3	Density-based clustering algorithm for fault detection and identification in HVAC systems.....243
C-04: Energetisches Gebäudemonitoring & Betriebsoptimierung	
C-04-1	Analysen eines zellulären, regionalen Energiesystems in Theorie und Praxis.....251
C-04-2	Monitoring Based Commissioning (MBCx) in energy and facility management.....259
C-04-3	Monitoring und Bilanzrechnung: Ganz ohne Performance Gap267
C-05: Building Envelope Systems	
C-05-1	Effects of water repellent on frost damage in outer walls of rock-hewn churches in Cappadocia, Turkey277
C-05-2	Selecting moisture reference year for hygrothermal simulations.....285
C-05-3	Study on environmental performance evaluation method on advanced façade system293
C-06: Building Material Properties	
C-06-1	Numerical estimation of isothermal moisture storage and transport properties301
C-06-2	Numerical simulation of drying process in building materials309
C-06-3	Two-scale model of masonry on parallel computers315
C-07: Integral Energy Concepts for Buildings and Neighborhoods	
C-07-1	Modeling low temperature district heating networks for the utilization of local energy potentials.....323
C-07-2	Urban energy modeling using Multivariate Cluster Analysis329
C-07-3	Feasibility study of a multilevel district heating grid with dissolved supply and return using Modelica.....337
C-08: Human Comfort, Health and Indoor Air Quality	
C-08-1	Human decision making in energy-relevant interaction with buildings.....345
C-08-2	Promotion of natural ventilation during summer in a traditional Japanese dwelling with a small courtyard.....353

D-01: Modelling and Simulation Analysis of Buildings	
D-01-1	Generation of building geometry for energy performance simulation using Modelica361
D-01-2	Stochastic analysis for design space exploration and building performance optimisation369
D-01-3	Combination of Monte-Carlo approach and artificial neural network for the determination of Swiss typical building thermal load profiles.....377
D-02: Interoperability, Building Information Modelling (BIM)	
D-02-1	Model view definition for advanced building energy performance simulation383
D-02-2	eeBIM Lab – Towards a coherent green building design process.....391
D-02-3	Hysteresis of liquid moisture transport in porous building materials: experimental and computational analysis.....397
D-03: Modellierung und Simulation im Lebenszyklus von Gebäuden	
D-03-1	Modellprädiktive Einzelraumregelung auf Basis empirischer Modelle.....405
D-03-2	State space models as a common tool for control design, optimization and fault detection in building systems.....413
D-03-3	Dezentrale Einspeisung von solaren Wärmeerträgen in Nah- oder Fernwärmenetze – Ergebnisse einer Simulationsstudie421
D-04: Building Envelope Systems	
D-04-1	Exploring the implications of variance in urban microclimate for buildings’ energy performance: a simulation based approach429
D-04-2	The performance of vacuum glazing in existing window constructions: A case study.....435
D-04-3	Numerische Simulation am Praxisbeispiel der Hygrothermie von Holzbalkenköpfen441
D-05: Gebäude – Anlage – Mensch	
D-05-1	Fertigteile zur multifunktionalen thermischen Nutzung449
D-05-2	Numerische und experimentelle Untersuchung thermisch aktivierter Sandwichwände mit integriertem Paraffin.....457
D-05-3	Qualitative und quantitative tageslichttechnische Fassadenplanung für die Beratungspraxis465
D-06: Gebäude – Anlage – Mensch	
D-06-1	BuildingSystems - Eine modular hierarchische Modellbibliothek zur energetischen Gebäude- und Anlagensimulation.....473
D-06-2	Coupling a thermal comfort model with building simulation for user comfort and energy efficiency481
D-06-3	Exploring the effectiveness of window operation models for thermal comfort and energy performance assessments489
D-07: Gebäude – Anlage – Mensch	
D-07-1	Simulation und experimentelle Evaluierung thermoaktiver Textilien für die energieeffiziente Heizung und Kühlung von Räumen497
D-07-2	Betonkernaktivierung mit Luft im Vergleich zu etablierten Systemen der Raumkühlung505
D-07-3	Agentenbasierte Steuerung von thermischer Simulation in Echtzeit513
D-08: Algorithms for Computer-aided Decision Making	
D-08-1	Calibration of building energy use models: A case study of three residential buildings in Kosovo521
D-08-2	Numerical calculation of direct sound transmission using a combined finite element – statistical energy analysis approach527
E-01: Datenflusketten, Kopplung von Simulationsprogrammen	
E-01-1	Scalable design-driven parameterization of reduced order models using archetype buildings with TEASER535
E-01-2	Coupling building morphology optimization and energy efficiency – a proof of concept543
E-01-3	Erweiterung von Modellen zur Anwendung strukturvariabler Simulationen in Modelica551

E-02: Datenflussketten, Kopplung von Simulationsprogrammen	
E-02-1	Automated collocation of simulation modules in FMI-based Building Energy Co-Simulation.....559
E-02-2	Consideration of heating elements' behaviour in a co-simulation setting using model-predictive controls.....565
E-02-3	Schnittstellen für die Co-Simulationskopplung zwischen Gebäude- und Heizungsanlagensimulation573
E-03: Datenflussketten, Kopplung von Simulationsprogrammen	
E-03-1	Entwicklung von Algorithmen zur Simulatorkopplung unter Verwendung der FMI-Schnittstelle für Anwendungen in der Gebäudesimulation.....581
E-03-2	Integration von thermischer Gebäudesimulation und Strömungssimulation in einer Nutzeroberfläche - BIM HVACTool589
E-03-3	Instationäre energetische Bewertung von Wärmepumpen- und Mikro-KWK-Systemen – Simulation und Emulation597
E-04: Validierungsszenarien, Qualitätssicherung	
E-04-1	Simulation and validation of thermal air stratification in living spaces.....605
E-04-2	An inquiry into the reliability of urban-level CFD-based air flow field analysis.....613
E-04-3	Prüfung und Konvertierung von TGA ifcXML-Modellen zu SimModel621
E-05: Numerische Lösungsverfahren, Optimierung und Implementierung	
E-05-1	Ansätze zur Parallelisierung numerischer Lösungsverfahren in der Bauteilsimulation629
E-05-2	Vergleichende Betrachtung numerischer und messtechnischer Untersuchungen ausgewählter Referenzexperimente für die Heizungs- und Raumluftechnik637
E-05-3	Transformation der Gebäudeenergiesimulation NANDRAD mit variablem Zeitschrittlöser in eine FMU für Co-Simulation645
E-06: Numerische Lösungsverfahren, Optimierung und Implementierung	
E-06-1	Modellierung oberflächennaher Erdwärmeübertrager für Systemsimulationen in TRNSYS653
E-06-2	Adiabatic absorber model for the liquid desiccant distribution network at the technology park Berlin Adlershof using Modelica.....661
E-06-3	Analysis of cooling and heating energy provided by a green roof system with integrated air ducts for mid-latitude cities669
E-07: Wissenstransfer für die Simulationspraxis / Ausgewählte Praxisbeispiele	
E-07-1	Comparison of pipe network designs by CFD-simulations.....677
E-07-2	Application of calibrated CFD models for the assessment of a displacement ventilation system683
E-07-3	Softwaregestützte Wärmebedarfsermittlung bei Informations- und Ressourcenknappheit691
E-08: Gebäude – Anlage – Mensch	
E-08-1	Auswirkungen der Gebäudebegrünung auf das hygrothermische Verhalten der Gebäude und deren Umgebung.....697
E-08-2	Ganzheitliche energetische Modellierung von Privathaushalten unter Berücksichtigung von Gebäudestruktur und Nutzerverhalten705
POSTERS..... 713	
P-01-1	Exploring the effectiveness of building performance codes: A lighting standard case study.....715
P-01-2	Monolithic versus multilayered stone walls: capillary absorption723
P-01-3	Determination of moisture transport coefficients for cement mortar and cellular concrete in case of non-linear models of diffusion.....731
P-01-4	Experimental and theoretical analysis of water vapour accumulation in porous building materials.....739
P-01-5	Analytical model of transportation of saline solutions during drying745

P-02-1	Accounting for the temperature dependence in the sorption isotherms in the prediction of hygrothermal behavior of hemp concrete	751
P-02-2	An improvement of the airflow in the floor convector	759
P-02-3	From materials properties to modeling hygrothermal transfers of highly hygroscopic walls.....	767
P-02-4	The analysis of facing wall construction date on its humidity condition	775
P-02-5	Floating settlements – A new research area in the building physics.....	781
P-03-1	Development of a thermal building model for heat and electricity supply optimization in city quarters.....	787
P-03-2	Bestimmung, Bewertung und Reduktion von Wärmeverteilverlusten in Wohngebäuden.....	795
P-03-3	Global Dynamic Sensitivity Analysis using Functional Transformation for Energy Simulation of Residential Quarters	803
P-03-4	FMI-Kopplung von EnergyPlus mit MATLAB zur Abbildung von Interaktionen im Distrikt-Modell EmMi-transient	811
P-03-5	Modellbildung für thermische Arealvernetzung mit IDA-ICE	819
P-04-1	Simulation für Planungs-/Betrieboptimierung von Kreislaufverbund-Wärmerückgewinnungssystemen.....	827
P-04-2	Influence of control strategy on the performance of floor heating systems in unsteady state operation	835
P-04-3	LEXU II - Einsatz von außenliegender Wandtemperierung bei der Gebäudesanierung.....	843
P-05-1	Bedarfsberechnung vs. Simulation und Verbrauchsmessung am Beispiel einer Passivhaus-Sporthalle	851
P-05-2	Gesamtenergetische Gebäudeoptimierung im Spannungsfeld zwischen gesetzlichen Vorgaben und Praxis.....	859
P-05-4	An ontology-based tool for automated configuration and deployment of technical building management services	865

AUTHOR INDEX 873

PREFACE

DEAR PARTICIPANTS AND GUESTS OF CESBP AND BAUSIM 2016!

We are delighted to welcome you in Dresden at the joint-conference of CESBP and BauSIM. During the three days, researchers and experts will share and discuss their experiences and project results on different topics of building physics as well as of building and plant simulation. The large number of submitted papers on various topics finally selected by the scientific committee reflects the variety and complexity of specific research questions concerning building physics, buildings and systems. As shown in the official program, a large part is dedicated to those contributions in the field of simulation applications focused on lifecycle aspects of buildings, district balancing, as well as the interaction of Building – System – Human. Two full days of presentations on dataflow and numerical procedures are offering a sufficient number of topics for all fans of simulation techniques open for hopefully interesting and inspiring discussions with colleagues.

We hope that the event may provide an appropriate framework for the successful exchange of information and the permanent professional networking, so that you keep your stay in Dresden in good memory.

LIEBE TEILNEHMENDE UND GÄSTE VON CESBP UND BAUSIM 2016!

Wir freuen uns sehr, Sie hier in Dresden zu der gemeinsamen Konferenz von CESBP und BauSIM begrüßen zu dürfen. In den drei Veranstaltungstagen werden Forscher und Fachexperten ihre Erfahrungen und Projektergebnisse zu unterschiedlichsten Themen aus der Bauphysik sowie der Gebäude- und Anlagensimulation teilen und zur Diskussion stellen. Die große Zahl der eingereichten und durch die wissenschaftlichen Komitees für das Programm ausgewählten Beiträge zu den Themenschwerpunkten ist Ausdruck der Vielfalt und Komplexität konkreter bauphysikalischer, gebäude- und anlagentechnischer Forschungsfragen. Wie aus dem Programm ersichtlich, nehmen im Bereich der Simulationsanwendungen Beiträge zu den Lebenszyklusbetrachtungen von Gebäuden, der Quartiersbilanzierung, sowie der Interaktion von Gebäude-Anlage-Mensch einen großen Raum ein. Für die Freunde der Simulationstechniken bieten zwei volle Tage mit Referaten zu Datenflusketten und numerischen Lösungsverfahren auch ausreichend Stoff für hoffentlich interessante und anregende Gespräche mit Fachkolleginnen und -kollegen.

Wir wünschen uns, dass die Veranstaltung so einen geeigneten Rahmen für den erfolgreichen Informationsaustausch und die bleibende fachliche Vernetzungen bieten kann, so dass Sie Dresden in guter Erinnerung behalten.

Prof. Dr.-Ing. John Grunewald

Prof. Dr.-Ing. Clemens Felsmann

COMMITTEES

INTERNATIONAL SCIENTIFIC COMMITTEE (CESBP)

John Grunewald (Dresden, Germany, chair)
Ardeshir Mahdavi (Vienna, Austria, vice-chair)
Dariusz Gawin (Łódź, Poland, vice-chair)
Robert Černý (Prague, Czech Republic, vice-chair)
Peter Matiasovsky (Bratislava, Slovakia, vice-chair)

Jesper Arfvidsson (Lund, Sweden)
Vasco Peixoto de Freitas (Porto, Portugal)
Stig Geving (Trondheim, Norway)
Carl-Eric Hagentoft (Gothenburg, Sweden)
Shuichi Hokoi (Kyoto, Japan)
Andreas H. Holm (Munich, Germany)
Hans Jansen (Leuven, Belgium)
Arnold Janssens (Ghent, Belgium)
Jan Kosny (Boston, USA)
Jaroslav Kruis (Prague, Czech Republic)
Bob Martens (Vienna, Austria)
Carsten Rode (Lyngby, Denmark)
Staf Roels (Leuven, Belgium)
Henk Schellen (Eindhoven, The Netherlands)
Matthias Schuß (Vienna, Austria)
Juha Vinha (Tampere, Finland)
Libor Vozar (Nitra, Slovakia)

SCIENTIFIC COMMITTEE (BAUSIM)

John Grunewald (Dresden, Germany)
Clemens Felsmann (Dresden, Germany)
Andreas Nicolai (Dresden, Germany)
Joachim Seifert (Dresden, Germany)
Martin Bauer (Augsburg, Germany)
Petra von Both (Karlsruhe, Germany)
Sebastian Herkel (Freiburg, Germany)
Werner Jensch (Munich, Germany)
Roland Koenigsdorff (Biberach, Germany)
Martin Kriegel (Berlin, Germany)
Hans-Peter Leimer (Hildesheim, Germany)
Anton Maas (Kassel, Germany)
Madjid Madjidi (Munich, Germany)
Dirk Müller (Aachen, Germany)
Christoph Nytsch-Geusen (Berlin, Germany)
Christian Schweigler (Munich, Germany)
Klaus Sedlbauer (Munich, Germany)
Volker Stockinger (Munich, Germany)
Christoph van Treeck (Aachen, Germany)
Andreas Wagner (Karlsruhe, Germany)

